



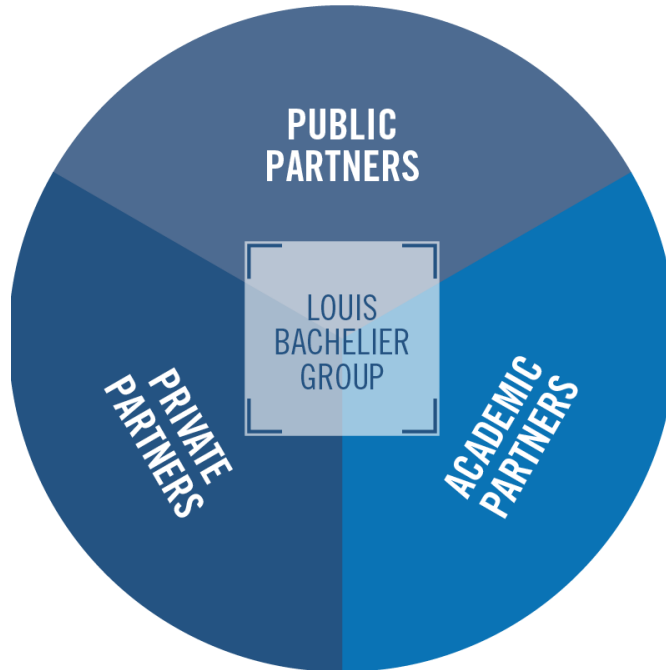
INSTITUT LOUIS BACHELIER

Driving engine of
The Louis Bachelier Network & The Louis Bachelier Group

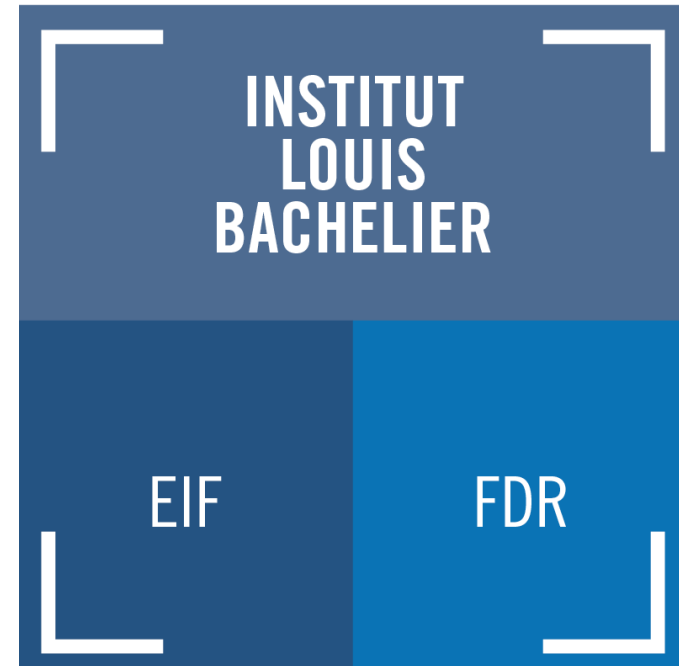
Nov17

INSTITUT LOUIS BACHELIER: The driving engine of two structures

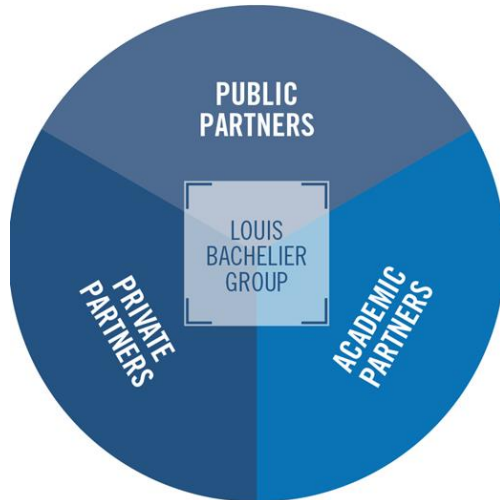
LOUIS BACHELIER NETWORK



LOUIS BACHELIER GROUP



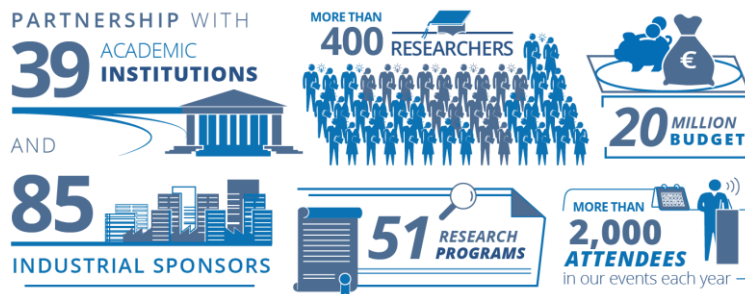
LOUIS BACHELIER NETWORK

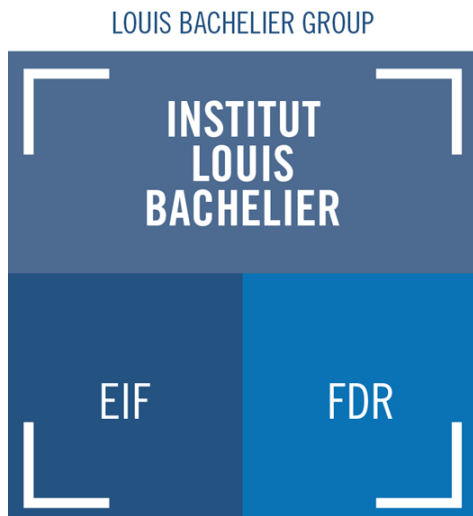


The Louis Bachelier Network is created to stimulate exchange of knowledge and cross collaboration aiming at supporting sustainable development within finance and economics.

We currently run 51 research programs within four main transition-areas that affect our global society:

- ❑ Finance
- ❑ Demography
- ❑ Climate
- ❑ Digitalization





The Louis Bachelier Group works to finance, develop and promote excellent research in economics and finance.

The Louis Bachelier Group consists of Institut Louis Bachelier (ILB) and the two foundations “Institut Europlace de Finance” (EIF) and “Fondation du Risque” (FDR).

A Louis Bachelier Network membership includes access to the Louis Bachelier Group services:

- ❑ **Partnership search, Incubation of projects, Agreements,** Budget/Reporting systems, Facilities, Organization of events, Scientific morning briefings, Specialized seminars, MOOCs, Data mining, data science & modeling services.
- ❑ **Access to a high value public-private research network**
 - ❑ **Access to funding pools** EIF/FDR foundations and the LABEX label.
 - ❑ **Publication and promotion of you and your work** through ILB media channels:
Web (LouisBachelier.org, institutlouisbachelier.org)
Publications (Opinions & Debats, Cahiers Louis Bachelier)
Podcasts, Web TV, press activities.

Welcome to the Louis Bachelier Network!

Subscribe to our newsletter on:

www.louisbachelier.org



Create opportunities for excellent French research within Economics and Finance.

Be an **incubator** of public-private collaborations between actors in the eco-system.

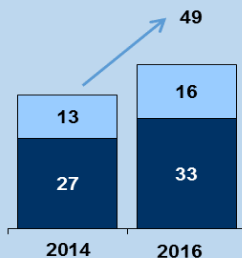
Give professionals **access to a first in class talent pool** of researchers and researchers a **window to show their work**.

Support decision making on issues related to Economics and Finance through **development of new knowledge**.

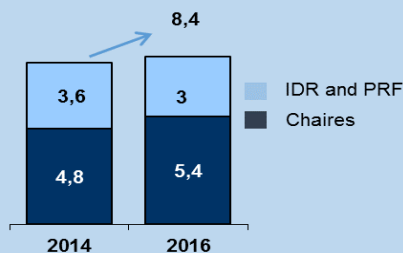
Put first class French research **on international agendas** by **communicating** findings on current, central issues within four transition areas of global importance.

Provide **learning and interaction** to the Louis Bachelier Network.

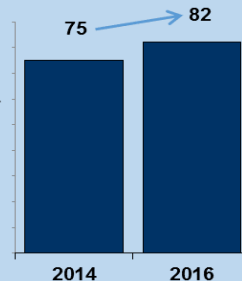
Development in number of research programs



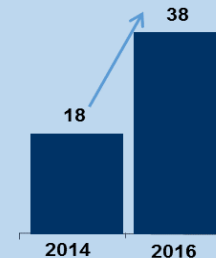
Development in research budget (million €)



Development in number of partners in research programs



Development in number of publications edited by ILB





Please contact ILB if you wish to be part of the Louis Bachelier Network.
contact@institutlouisbachelier.org

For more info on:

News and events, please go to www.LouisBachelier.org

The Louis Bachelier Group, please go to www.InstitutLouisBachelier.org

You can also follow our activities on Twitter:

@LouisBachelier